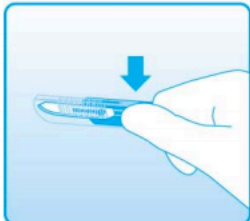


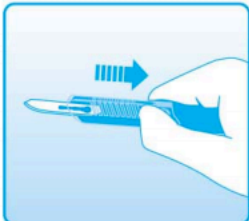
SAFETY GUARD SCALPELS

How to use Safety Scalpel



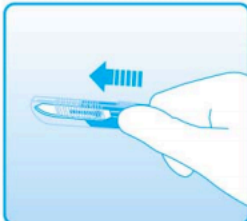
1 OPEN

Press button.
Do not push forward.



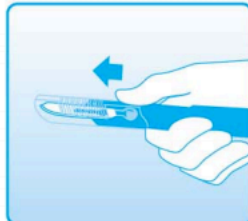
2 READY FOR USE

Pull guard forward to expose the blade.
Listen for click when the blade is fully opened.
Now it is ready for use.



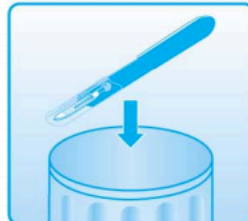
3 CLOSE

Push guard forward to cover the blade.
Listen for click.



4 SAFETY LOCK

Hold one or two sides of guard.
Push forward until click for safety lock.



5 DISPOSE

Dispose the scalpel in a suitable container.



0197

STERILE R



Sterility guaranteed unless package has been damaged or seal is broken.



10 pcs.



0197

SCALPELS
STERILE DISPOSABLE
'SAFETY GUARD'

